

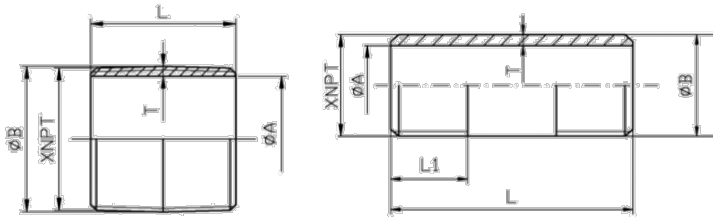
# 316 Stainless Steel Nipples • Spec Sheet



Material Test Reports Available

## FEATURES & BENEFITS

- Stainless Steel 316/316L
- Schedule 40
- Material Test Reports (MTR'S) Available
- Stainless Steel Conforms to ASTM A312/A312M
- Dimensions & Ends Conform to ASTM A733
- Threads Conform to ASME B1.20.1
- Meets NSF / ANSI 372
- RoHS Compliant



## DIMENSIONS

Part #	Size	A	B	L	L1	T (min.)	Part #	Size	A	B	L	L1	T (min.)
SSN31600CL	1/8 X CLOSE	0.285	0.405	3/4		0.060	SSN316018	1/4 X 8	0.386	0.54	8	0.5946	0.077
SSN31601CL	1/4 X CLOSE	0.386	0.540	7/8		0.077	SSN3160110	1/4 X 10	0.386	0.54	10	0.5946	0.077
SSN31602CL	3/8 X CLOSE	0.515	0.675	1		0.080	SSN3160112	1/4 X 12	0.386	0.54	12	0.5946	0.077
SSN31603CL	1/2 X CLOSE	0.650	0.840	1-1/8		0.095	SSN31602112	3/8 X 1-1/2	0.515	0.675	1-1/2	0.6006	0.08
SSN31604CL	3/4 X CLOSE	0.852	1.050	1-3/8		0.099	SSN316022	3/8 X 2	0.515	0.675	2	0.6006	0.08
SSN31605CL	1 X CLOSE	1.083	1.315	1-1/2		0.116	SSN31602212	3/8 X 2-1/2	0.515	0.675	2-1/2	0.6006	0.08
SSN31606CL	1-1/4 X CLOSE	1.414	1.660	1-5/8		0.123	SSN316023	3/8 X 3	0.515	0.675	3	0.6006	0.08
SSN31607CL	1-1/2 X CLOSE	1.646	1.900	1-3/4		0.127	SSN31602312	3/8 X 3-1/2	0.515	0.675	3-1/2	0.6006	0.08
SSN31608CL	2 X CLOSE	2.105	2.375	2		0.135	SSN316024	3/8 X 4	0.515	0.675	4	0.6006	0.08
SSN31609CL	2-1/2 X CLOSE	2.519	2.875	2-1/2		0.178	SSN31602412	3/8 X 4-1/2	0.515	0.675	4-1/2	0.6006	0.08
SSN31610CL	3 X CLOSE	3.122	3.500	2-5/8		0.189	SSN316025	3/8 X 5	0.515	0.675	5	0.6006	0.08
SSN31611CL	4 X CLOSE	4.086	4.500	2-7/8		0.207	SSN31602512	3/8 X 5-1/2	0.515	0.675	5-1/2	0.6006	0.08
SSN31600112	1/8 X 1-1/2	0.285	0.405	1-1/2	0.3924	0.060	SSN316026	3/8 X 6	0.515	0.675	6	0.6006	0.08
SSN316002	1/8 X 2	0.285	0.405	2	0.3924	0.060	SSN316028	3/8 X 8	0.515	0.675	8	0.6006	0.08
SSN31600212	1/8 X 2-1/2	0.285	0.405	2-1/2	0.3924	0.060	SSN3160210	3/8 X 10	0.515	0.675	10	0.6006	0.08
SSN316003	1/8 X 3	0.285	0.405	3	0.3924	0.060	SSN3160212	3/8 X 12	0.515	0.675	12	0.6006	0.08
SSN31600312	1/8 X 3-1/2	0.285	0.405	3-1/2	0.3924	0.060	SSN31603112	1/2 X 1-1/2	0.65	0.84	1-1/2	0.7815	0.095
SSN316004	1/8 X 4	0.285	0.405	4	0.3924	0.060	SSN316032	1/2 X 2	0.65	0.84	2	0.7815	0.095
SSN31600412	1/8 X 4-1/2	0.285	0.405	4-1/2	0.3924	0.060	SSN31603212	1/2 X 2-1/2	0.65	0.84	2-1/2	0.7815	0.095
SSN316005	1/8 X 5	0.285	0.405	5	0.3924	0.060	SSN316033	1/2 X 3	0.65	0.84	3	0.7815	0.095
SSN31600512	1/8 X 5-1/2	0.285	0.405	5-1/2	0.3924	0.060	SSN31603312	1/2 X 3-1/2	0.65	0.84	3-1/2	0.7815	0.095
SSN316006	1/8 X 6	0.285	0.405	6	0.3924	0.060	SSN316034	1/2 X 4	0.65	0.84	4	0.7815	0.095
SSN316008	1/8 X 8	0.285	0.405	8	0.3924	0.06	SSN31603412	1/2 X 4-1/2	0.65	0.84	4-1/2	0.7815	0.095
SSN3160010	1/8 X 10	0.285	0.405	10	0.3924	0.06	SSN316035	1/2 X 5	0.65	0.84	5	0.7815	0.095
SSN3160012	1/8 X 12	0.285	0.405	12	0.3924	0.06	SSN31603512	1/2 X 5-1/2	0.65	0.84	5-1/2	0.7815	0.095
SSN316012	1/4 X 2	0.386	0.54	2	0.5946	0.077	SSN316036	1/2 X 6	0.65	0.84	6	0.7815	0.095
SSN31601212	1/4 X 2-1/2	0.386	0.54	2-1/2	0.5946	0.077	SSN316037	1/2 X 7	0.65	0.84	7	0.7815	0.095
SSN316013	1/4 X 3	0.386	0.54	3	0.5946	0.077	SSN316038	1/2 X 8	0.65	0.84	8	0.7815	0.095
SSN31601312	1/4 X 3-1/2	0.386	0.54	3-1/2	0.5946	0.077	SSN316039	1/2 X 9	0.65	0.84	9	0.7815	0.095
SSN316014	1/4 X 4	0.386	0.54	4	0.5946	0.077	SSN3160310	1/2 X 10	0.65	0.84	10	0.7815	0.095
SSN31601412	1/4 X 4-1/2	0.386	0.54	4-1/2	0.5946	0.077	SSN3160311	1/2 X 11	0.65	0.84	11	0.7815	0.095
SSN316015	1/4 X 5	0.386	0.54	5	0.5946	0.077	SSN3160312	1/2 X 12	0.65	0.84	12	0.7815	0.095
SSN31601512	1/4 X 5-1/2	0.386	0.54	5-1/2	0.5946	0.077	SSN31604112	3/4 X 1-1/2	0.852	1.05	1-1/2	0.7935	0.099
SSN316016	1/4 X 6	0.386	0.54	6	0.5946	0.077	SSN316042	3/4 X 2	0.852	1.05	2	0.7935	0.099

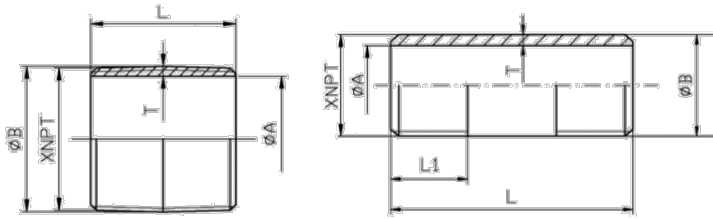
# 316 Stainless Steel Nipples • Spec Sheet



Material Test Reports Available

## FEATURES & BENEFITS

- Stainless Steel 316/316L
- Schedule 40
- Material Test Reports (MTR'S) Available
- Stainless Steel Conforms to ASTM A312/A312M
- Dimensions & Ends Conform to ASTM A733
- Threads Conform to ASME B1.20.1
- Meets NSF / ANSI 372
- RoHS Compliant



## DIMENSIONS

Part #	Size	A	B	L	L1	T (min.)	Part #	Size	A	B	L	L1	T (min.)
SSN31604212	3/4 X 2-1/2	0.852	1.05	2-1/2	0.7935	0.099	SSN316064	1-1/4 X 4	1.414	1.66	4	1.0085	0.123
SSN31604312	3/4 X 3-1/2	0.852	1.05	3-1/2	0.7935	0.099	SSN31606412	1-1/4 X 4-1/2	1.414	1.66	4-1/2	1.0085	0.123
SSN316044	3/4 X 4	0.852	1.05	4	0.7935	0.099	SSN316065	1-1/4 X 5	1.414	1.66	5	1.0085	0.123
SSN31604412	3/4 X 4-1/2	0.852	1.05	4-1/2	0.7935	0.099	SSN31606512	1-1/4 X 5-1/2	1.414	1.66	5-1/2	1.0085	0.123
SSN316045	3/4 X 5	0.852	1.05	5	0.7935	0.099	SSN316066	1-1/4 X 6	1.414	1.66	6	1.0085	0.123
SSN31604512	3/4 X 5-1/2	0.852	1.05	5-1/2	0.7935	0.099	SSN316067	1-1/4 X 7	1.414	1.66	7	1.0085	0.123
SSN316046	3/4 X 6	0.852	1.05	6	0.7935	0.099	SSN316068	1-1/4 X 8	1.414	1.66	8	1.0085	0.123
SSN316047	3/4 X 7	0.852	1.05	7	0.7935	0.099	SSN316069	1-1/4 X 9	1.414	1.66	9	1.0085	0.123
SSN316048	3/4 X 8	0.852	1.05	8	0.7935	0.099	SSN3160610	1-1/4 X 10	1.414	1.66	10	1.0085	0.123
SSN316049	3/4 X 9	0.852	1.05	9	0.7935	0.099	SSN3160611	1-1/4 X 11	1.414	1.66	11	1.0085	0.123
SSN3160410	3/4 X 10	0.852	1.05	10	0.7935	0.099	SSN3160612	1-1/4 X 12	1.414	1.66	12	1.0085	0.123
SSN3160411	3/4 X 11	0.852	1.05	11	0.7935	0.099	SSN316072	1-1/2 X 2	1.646	1.90	2	1.0252	0.127
SSN3160412	3/4 X 12	0.852	1.05	12	0.7935	0.099	SSN31607212	1-1/2 X 2-1/2	1.646	1.90	2-1/2	1.0252	0.127
SSN316053	1 X 3	1.083	1.315	3	0.9845	0.116	SSN316073	1-1/2 X 3	1.646	1.90	3	1.0252	0.127
SSN316052	1 X 2	1.083	1.315	2	0.9845	0.116	SSN31607312	1-1/2 X31/2	1.646	1.90	3-1/2	1.0252	0.127
SSN31605212	1 X 2-1/2	1.083	1.315	2-1/2	0.9845	0.116	SSN316074	1-1/2 X 4	1.646	1.90	4	1.0252	0.127
SSN316053	1 X 3	1.083	1.315	3	0.9845	0.116	SSN31607412	1-1/2 X 4-1/2	1.646	1.90	4-1/2	1.0252	0.127
SSN31605312	1 X 3-1/2	1.083	1.315	3-1/2	0.9845	0.116	SSN316075	1-1/2 X 5	1.646	1.90	5	1.0252	0.127
SSN316054	1 X 4	1.083	1.315	4	0.9845	0.116	SSN31607512	1-1/2 X 5-1/2	1.646	1.90	5-1/2	1.0252	0.127
SSN31605412	1 X 4-1/2	1.083	1.315	4-1/2	0.9845	0.116	SSN316076	1-1/2 X 6	1.646	1.90	6	1.0252	0.127
SSN316055	1 X 5	1.083	1.315	5	0.9845	0.116	SSN316077	1-1/2 X 7	1.646	1.90	7	1.0252	0.127
SSN31605512	1 X 5-1/2	1.083	1.315	5-1/2	0.9845	0.116	SSN316078	1-1/2 X 8	1.646	1.90	8	1.0252	0.127
SSN316056	1 X 6	1.083	1.315	6	0.9845	0.116	SSN316079	1-1/2 X 9	1.646	1.90	9	1.0252	0.127
SSN316057	1 X 7	1.083	1.315	7	0.9845	0.116	SSN3160710	1-1/2 X 10	1.646	1.90	10	1.0252	0.127
SSN316058	1 X 8	1.083	1.315	8	0.9845	0.116	SSN3160711	1-1/2 X 11	1.646	1.90	11	1.0252	0.127
SSN316059	1 X 9	1.083	1.315	9	0.9845	0.116	SSN3160712	1-1/2 X 12	1.646	1.90	12	1.0252	0.127
SSN3160510	1 X 10	1.083	1.315	10	0.9845	0.116	SSN31608212	2 X 2-1/2	2.105	2.375	2-1/2	1.0582	0.135
SSN3160511	1 X 11	1.083	1.315	11	0.9845	0.116	SSN316083	2 X 3	2.105	2.375	3	1.0582	0.135
SSN3160512	1 X 12	1.083	1.315	12	0.9845	0.116	SSN31608312	2 X 3-1/2	2.105	2.375	3-1/2	1.0582	0.135
SSN316062	1-1/4 X 2	1.414	1.66	2	1.0085	0.123	SSN316084	2 X 4	2.105	2.375	4	1.0582	0.135
SSN31606212	1-1/4 X 2-1/2	1.414	1.66	2-1/2	1.0085	0.123	SSN31608412	2 X 4-1/2	2.105	2.375	4-1/2	1.0582	0.135
SSN316063	1-1/4 X 3	1.414	1.66	3	1.0085	0.123	SSN316085	2 X 5	2.105	2.375	5	1.0582	0.135
SSN31606312	1-1/4 X 3-1/2	1.414	1.66	3-1/2	1.0085	0.123	SSN31608512	2 X 5-1/2	2.105	2.375	5-1/2	1.0582	0.135

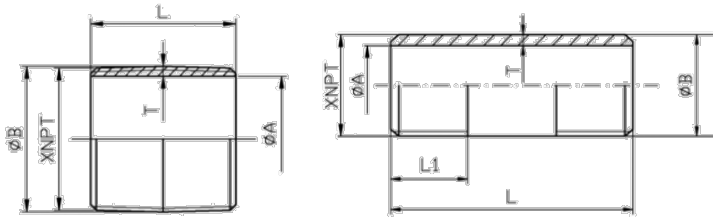
# 316 Stainless Steel Nipples • Spec Sheet



Material Test Reports Available

## FEATURES & BENEFITS

- Stainless Steel 316/316L
- Schedule 40
- Material Test Reports (MTR'S) Available
- Stainless Steel Conforms to ASTM A312/A312M
- Dimensions & Ends Conform to ASTM A733
- Threads Conform to ASME B1.20.1
- Meets NSF / ANSI 372
- RoHS Compliant



## DIMENSIONS

Part #	Size	A	B	L	L1	T (min.)	Part #	Size	A	B	L	L1	T (min.)
SSN316086	2 X 6	2.105	2.375	6	1.0582	0.135	SSN316103	3 X 3	3.122	3.50	3	1.6337	0.189
SSN316087	2 X 7	2.105	2.375	7	1.0582	0.135	SSN31610312	3 X 3-1/2	3.122	3.50	3-1/2	1.6337	0.189
SSN316088	2 X 8	2.105	2.375	8	1.0582	0.135	SSN316104	3 X 4	3.122	3.50	4	1.6337	0.189
SSN316089	2 X 9	2.105	2.375	9	1.0582	0.135	SSN31610412	3 X 4-1/2	3.122	3.50	4-1/2	1.6337	0.189
SSN3160810	2 X 10	2.105	2.375	10	1.0582	0.135	SSN316105	3 X 5	3.122	3.50	5	1.6337	0.189
SSN3160811	2 X 11	2.105	2.375	11	1.0582	0.135	SSN31610512	3 X 5-1/2	3.122	3.50	5-1/2	1.6337	0.189
SSN3160812	2 X 12	2.105	2.375	12	1.0582	0.135	SSN316106	3 X 6	3.122	3.50	6	1.6337	0.189
SSN316093	2-1/2 X 3	2.519	2.875	3	1.5712	0.178	SSN316108	3 X 8	3.122	3.50	8	1.6337	0.189
SSN31609312	2-1/2 X 3-1/2	2.519	2.875	3-1/2	1.5712	0.178	SSN3161010	3 X 10	3.122	3.50	10	1.6337	0.189
SSN316094	2-1/2 X 4	2.519	2.875	4	1.5712	0.178	SSN3161012	3 X 12	3.122	3.50	12	1.6337	0.189
SSN31609412	2-1/2 X 4-1/2	2.519	2.875	4-1/2	1.5712	0.178	SSN316114	4 X 4	4.086	4.50	4	1.7337	0.207
SSN316095	2-1/2 X 5	2.519	2.875	5	1.5712	0.178	SSN31611412	4 X 4-1/2	4.086	4.50	4-1/2	1.7337	0.207
SSN31609512	2-1/2 X 5-1/2	2.519	2.875	5-1/2	1.5712	0.178	SSN316115	4 X 5	4.086	4.50	5	1.7337	0.207
SSN316096	2-1/2 X 6	2.519	2.875	6	1.5712	0.178	SSN316116	4 X 6	4.086	4.50	6	1.7337	0.207
SSN316098	2-1/2 X 8	2.519	2.875	8	1.5712	0.178	SSN316118	4 X 8	4.086	4.50	8	1.7337	0.207
SSN3160910	2-1/2 X 10	2.519	2.875	10	1.5712	0.178	SSN3161110	4 X 10	4.086	4.50	10	1.7337	0.207
SSN3160912	2-1/2 X 12	2.519	2.875	12	1.5712	0.178	SSN3161112	4 X 12	4.086	4.50	12	1.7337	0.207



**CALIFORNIA** 5595 Fresca Dr., La Palma CA 90623  
**TEXAS** 1150 Silber Rd., Houston TX 77055  
**ILLINOIS** 278 Windy Point Dr., Glendale Heights, IL 60139  
**GEORGIA** 113 Industrial Blvd., Americus, Georgia 31709  
**NEW YORK** PO Box 27, Rt.22, Brewster NY 10509  
 WEB: [www.matco-norca.com](http://www.matco-norca.com)

• Phone: 866-532-8306 • Fax: 866-532-8307  
 • Phone: 800-935-5456 • Fax: 713-680-2999  
 • Phone: 844-412-5068 • Fax: 800-640-2252  
 • Phone: 800-433-7526 • Fax: 800-533-5134  
 • Phone: 800-431-2082 • Fax: 845-278-9056  
 EMAIL: [mail@matco-norca.com](mailto:mail@matco-norca.com)

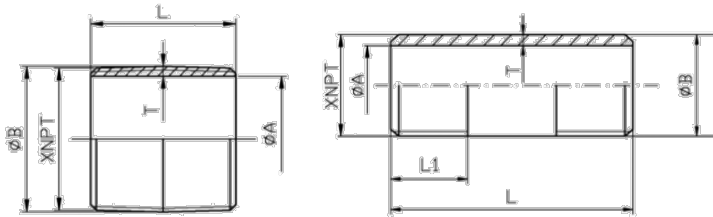
# 304 Stainless Steel Nipples • Spec Sheet



Material Test Reports Available

## FEATURES & BENEFITS

- Stainless Steel 304
- Schedule 40
- Material Test Reports (MTR'S) Available
- Stainless Steel Conforms to ASTM A312/A312M
- Dimensions & Ends Conform to ASTM A733
- Threads Conform to ASME B1.20.1
- Meets NSF / ANSI 372
- RoHS Compliant



## DIMENSIONS

Part #	Size	A	B	L	L1	T (min.)	Part #	Size	A	B	L	L1	T (min.)
SSN30400CL	1/8 X CLOSE	0.285	0.405	3/4		0.060	SSN304015	1/4 X 5	0.386	0.54	5	0.5946	0.077
SSN30401CL	1/4 X CLOSE	0.386	0.54	7/8		0.077	SSN30401512	1/4 X 5-1/2	0.386	0.54	5-1/2	0.5946	0.077
SSN30402CL	3/8 X CLOSE	0.515	0.675	1		0.080	SSN304016	1/4 X 6	0.386	0.54	6	0.5946	0.077
SSN30403CL	1/2 X CLOSE	0.65	0.84	1-1/8		0.095	SSN304018	1/4 X 8	0.386	0.54	8	0.5946	0.077
SSN30404CL	3/4 X CLOSE	0.852	1.05	1-3/8		0.099	SSN3040110	1/4 X 10	0.386	0.54	10	0.5946	0.077
SSN30405CL	1 X CLOSE	1.083	1.315	1-1/2		0.116	SSN3040112	1/4 X 12	0.386	0.54	12	0.5946	0.077
SSN30406CL	1-1/4 X CLOSE	1.414	1.66	1-5/8		0.123	SSN30402112	3/8 X 1-1/2	0.515	0.675	1-1/2	0.6006	0.08
SSN30407CL	1-1/2 X CLOSE	1.646	1.90	1-3/4		0.127	SSN304022	3/8 X 2	0.515	0.675	2	0.6006	0.08
SSN30408CL	2 X CLOSE	2.105	2.375	2		0.135	SSN30402212	3/8 X 2-1/2	0.515	0.675	2-1/2	0.6006	0.08
SSN30409CL	2-1/2 X CLOSE	2.519	2.875	2-1/2		0.178	SSN304023	3/8 X 3	0.515	0.675	3	0.6006	0.08
SSN30410CL	3 X CLOSE	3.122	3.50	2-5/8		0.189	SSN30402312	3/8 X 3-1/2	0.515	0.675	3-1/2	0.6006	0.08
SSN30411CL	4 X CLOSE	4.086	4.50	2-7/8		0.207	SSN304024	3/8 X 4	0.515	0.675	4	0.6006	0.08
SSN30413CL	6 X CLOSE	6.135	6.625	3-1/8		0.245	SSN30402412	3/8 X 4-1/2	0.515	0.675	4-1/2	0.6006	0.08
SSN30400112	1/8 X 1-1/2	0.285	0.405	1-1/2	0.3924	0.06	SSN304025	3/8 X 5	0.515	0.675	5	0.6006	0.08
SSN304002	1/8 X 2	0.285	0.405	2	0.3924	0.06	SSN30402512	3/8 X 5-1/2	0.515	0.675	5-1/2	0.6006	0.08
SSN30400212	1/8 X 2-1/2	0.285	0.405	2-1/2	0.3924	0.06	SSN304026	3/8 X 6	0.515	0.675	6	0.6006	0.08
SSN304003	1/8 X 3	0.285	0.405	3	0.3924	0.06	SSN304028	3/8 X 8	0.515	0.675	8	0.6006	0.08
SSN30400312	1/8 X 3-1/2	0.285	0.405	3-1/2	0.3924	0.06	SSN3040210	3/8 X 10	0.515	0.675	10	0.6006	0.08
SSN304004	1/8 X 4	0.285	0.405	4	0.3924	0.06	SSN3040211	3/8 X 11	0.515	0.675	11	0.6006	0.08
SSN30400412	1/8 X 4-1/2	0.285	0.405	4-1/2	0.3924	0.06	SSN3040212	3/8 X 12	0.515	0.675	12	0.6006	0.08
SSN304005	1/8 X 5	0.285	0.405	5	0.3924	0.06	SSN30403112	1/2 X 1-1/2	0.65	0.84	1-1/2	0.7815	0.095
SSN30400512	1/8 X 5-1/2	0.285	0.405	5-1/2	0.3924	0.06	SSN304032	1/2 X 2	0.65	0.84	2	0.7815	0.095
SSN304006	1/8 X 6	0.285	0.405	6	0.3924	0.06	SSN30403212	1/2X 2-1/2	0.65	0.84	2-1/2	0.7815	0.095
SSN304008	1/8 X 8	0.285	0.405	8	0.3924	0.06	SSN304033	1/2 X 3	0.65	0.84	3	0.7815	0.095
SSN3040010	1/8 X 10	0.285	0.405	10	0.3924	0.06	SSN30403312	1/2 X 3-1/2	0.65	0.84	3-1/2	0.7815	0.095
SSN3040012	1/8 X 12	0.285	0.405	12	0.3924	0.06	SSN304034	1/2 X 4	0.65	0.84	4	0.7815	0.095
SSN30401112	1/4 X 1-1/2	0.386	0.54	1-1/2	0.5946	0.077	SSN30403412	1/2 X 4-1/2	0.65	0.84	4-1/2	0.7815	0.095
SSN304012	1/4 X 2	0.386	0.54	2	0.5946	0.077	SSN304035	1/2 X 5	0.65	0.84	5	0.7815	0.095
SSN30401212	1/4 X 2-1/2	0.386	0.54	2-1/2	0.5946	0.077	SSN30403512	1/2 X 5-1/2	0.65	0.84	5-1/2	0.7815	0.095
SSN304013	1/4 X 3	0.386	0.54	3	0.5946	0.077	SSN304036	1/2 X 6	0.65	0.84	6	0.7815	0.095
SSN30401312	1/4 X 3-1/2	0.386	0.54	3-1/2	0.5946	0.077	SSN304037	1/2 X 7	0.65	0.84	7	0.7815	0.095
SSN304014	1/4X 4	0.386	0.54	4	0.5946	0.077	SSN304038	1/2 X 8	0.65	0.84	8	0.7815	0.095
SSN30401412	1/4X 4-1/2	0.386	0.54	4-1/2	0.5946	0.077	SSN304039	1/2 X 9	0.65	0.84	9	0.7815	0.095

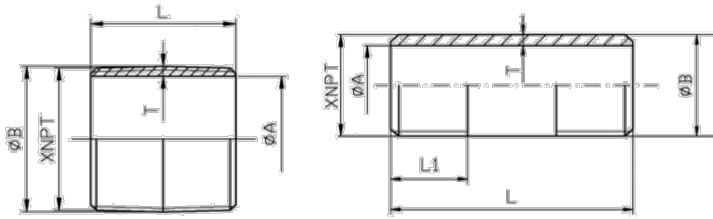
# 304 Stainless Steel Nipples • Spec Sheet



Material Test Reports Available

## FEATURES & BENEFITS

- Stainless Steel 304
- Schedule 40
- Material Test Reports (MTR'S) Available
- Stainless Steel Conforms to ASTM A312/A312M
- Dimensions & Ends Conform to ASTM A733
- Threads Conform to ASME B1.20.1
- Meets NSF / ANSI 372
- RoHS Compliant



## DIMENSIONS

Part #	Size	A	B	L	L1	T (min.)	Part #	Size	A	B	L	L1	T (min.)
SSN3040310	1/2 X 10	0.65	0.84	10	0.7815	0.095	SSN3040511	1 X 11	1.083	1.315	11	0.9845	0.116
SSN3040311	1/2 X 11	0.65	0.84	11	0.7815	0.095	SSN3040512	1 X 12	1.083	1.315	12	0.9845	0.116
SSN3040312	1/2 X 12	0.65	0.84	12	0.7815	0.095	SSN304062	1-1/4 X 2	1.414	1.66	2	1.0085	0.123
SSN30404112	3/4 X 1-1/2	0.852	1.05	1-1/2	0.7935	0.099	SSN30406212	1-1/4 X 2-1/2	1.414	1.66	2-1/2	1.0085	0.123
SSN304042	3/4 X 2	0.852	1.05	2	0.7935	0.099	SSN304063	1-1/4 X 3	1.414	1.66	3	1.0085	0.123
SSN30404212	3/4 X 2-1/2	0.852	1.05	2-1/2	0.7935	0.099	SSN30406312	1-1/4 X 3-1/2	1.414	1.66	3-1/2	1.0085	0.123
SSN304043	3/4 X 3	0.852	1.05	3	0.7935	0.099	SSN304064	1-1/4 X 4	1.414	1.66	4	1.0085	0.123
SSN30404312	3/4 X 3-1/2	0.852	1.05	3-1/2	0.7935	0.099	SSN30406412	1-1/4 X 4-1/2	1.414	1.66	4-1/2	1.0085	0.123
SSN304044	3/4 X 4	0.852	1.05	4	0.7935	0.099	SSN304065	1-1/4 X 5	1.414	1.66	5	1.0085	0.123
SSN30404412	3/4 X 4-1/2	0.852	1.05	4-1/2	0.7935	0.099	SSN30406512	1-1/4 X 5-1/2	1.414	1.66	5-1/2	1.0085	0.123
SSN304045	3/4 X 5	0.852	1.05	5	0.7935	0.099	SSN304066	1-1/4 X 6	1.414	1.66	6	1.0085	0.123
SSN30404512	3/4 X 5-1/2	0.852	1.05	5-1/2	0.7935	0.099	SSN304067	1-1/4 X 7	1.414	1.66	7	1.0085	0.123
SSN304046	3/4 X 6	0.852	1.05	6	0.7935	0.099	SSN304068	1-1/4 X 8	1.414	1.66	8	1.0085	0.123
SSN304047	3/4 X 7	0.852	1.05	7	0.7935	0.099	SSN304069	1-1/4 X 9	1.414	1.66	9	1.0085	0.123
SSN304048	3/4 X 8	0.852	1.05	8	0.7935	0.099	SSN3040610	1-1/4 X 10	1.414	1.66	10	1.0085	0.123
SSN304049	3/4 X 9	0.852	1.05	9	0.7935	0.099	SSN3040611	1-1/4 X 11	1.414	1.66	11	1.0085	0.123
SSN3040410	3/4 X 10	0.852	1.05	10	0.7935	0.099	SSN3040612	1-1/4 X 12	1.414	1.66	12	1.0085	0.123
SSN3040411	3/4 X 11	0.852	1.05	11	0.7935	0.099	SSN304072	1-1/2 X 2	1.646	1.90	2	1.0252	0.127
SSN3040412	3/4 X 12	0.852	1.05	12	0.7935	0.099	SSN30407212	1-1/2 X 2-1/2	1.646	1.90	2-1/2	1.0252	0.127
SSN304052	1 X 2	1.083	1.315	2	0.9845	0.116	SSN304073	1-1/2 X 3	1.646	1.90	3	1.0252	0.127
SSN30405212	1 X 2-1/2	1.083	1.315	2-1/2	0.9845	0.116	SSN30407312	1-1/2 X 3-1/2	1.646	1.90	3-1/2	1.0252	0.127
SSN304053	1 X 3	1.083	1.315	3	0.9845	0.116	SSN304074	1-1/2 X 4	1.646	1.90	4	1.0252	0.127
SSN30405312	1 X 3-1/2	1.083	1.315	3-1/2	0.9845	0.116	SSN30407412	1-1/2 X 4-1/2	1.646	1.90	4-1/2	1.0252	0.127
SSN304054	1 X 4	1.083	1.315	4	0.9845	0.116	SSN304075	1-1/2 X 5	1.646	1.90	5	1.0252	0.127
SSN30405412	1 X 4-1/2	1.083	1.315	4-1/2	0.9845	0.116	SSN30407512	1-1/2 X 5-1/2	1.646	1.90	5-1/2	1.0252	0.127
SSN304055	1 X 5	1.083	1.315	5	0.9845	0.116	SSN304076	1-1/2 X 6	1.646	1.90	6	1.0252	0.127
SSN30405512	1 X 5-1/2	1.083	1.315	5-1/2	0.9845	0.116	SSN304077	1-1/2 X 7	1.646	1.90	7	1.0252	0.127
SSN304056	1 X 6	1.083	1.315	6	0.9845	0.116	SSN304078	1-1/2 X 8	1.646	1.90	8	1.0252	0.127
SSN304057	1 X 7	1.083	1.315	7	0.9845	0.116	SSN304079	1-1/2 X 9	1.646	1.90	9	1.0252	0.127
SSN304058	1 X 8	1.083	1.315	8	0.9845	0.116	SSN3040710	1-1/2 X 10	1.646	1.90	10	1.0252	0.127
SSN304059	1 X 9	1.083	1.315	9	0.9845	0.116	SSN3040711	1-1/2 X 11	1.646	1.90	11	1.0252	0.127
SSN3040510	1 X 10	1.083	1.315	10	0.9845	0.116	SSN3040712	1-1/2 X 12	1.646	1.90	12	1.0252	0.127

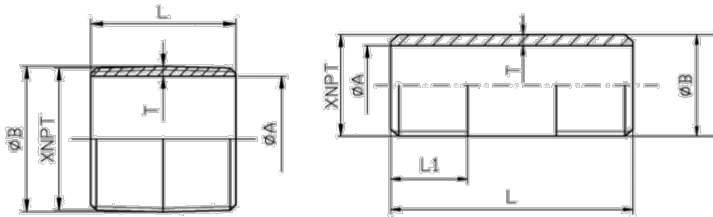
# 304 Stainless Steel Nipples • Spec Sheet



Material Test Reports Available

## FEATURES & BENEFITS

- Stainless Steel 304
- Schedule 40
- Material Test Reports (MTR'S) Available
- Stainless Steel Conforms to ASTM A312/A312M
- Dimensions & Ends Conform to ASTM A733
- Threads Conform to ASME B1.20.1
- Meets NSF / ANSI 372
- RoHS Compliant



## DIMENSIONS

Part #	Size	A	B	L	L1	T (min.)	Part #	Size	A	B	L	L1	T (min.)
SSN30408212	2 X 2-1/2	2.11	2.38	2-1/2	1.06	0.135	SSN304103	3 X 3	3.12	3.50	3	1.63	0.189
SSN304083	2 X 3	2.11	2.38	3	1.06	0.135	SSN30410312	3 X 3-1/2	3.12	3.50	3-1/2	1.63	0.189
SSN30408312	2 X 3-1/2	2.11	2.38	3-1/2	1.06	0.135	SSN304104	3 X 4	3.12	3.50	4	1.63	0.189
SSN304084	2 X 4	2.11	2.38	4	1.06	0.135	SSN30410412	3 X 4-1/2	3.12	3.50	4-1/2	1.63	0.189
SSN30408412	2 X 4-1/2	2.11	2.38	4-1/2	1.06	0.135	SSN304105	3 X 5	3.12	3.50	5	1.63	0.189
SSN304085	2 X 5	2.11	2.38	5	1.06	0.135	SSN30410512	3 X 5-1/2	3.12	3.50	5-1/2	1.63	0.189
SSN30408512	2 X 5-1/2	2.11	2.38	5-1/2	1.06	0.135	SSN304106	3 X 6	3.12	3.50	6	1.63	0.189
SSN304086	2 X 6	2.11	2.38	6	1.06	0.135	SSN304108	3 X 8	3.12	3.50	8	1.63	0.189
SSN304087	2 X 7	2.105	2.375	7	1.0582	0.135	SSN3041010	3 X 10	3.12	3.50	10	1.63	0.189
SSN304088	2 X 8	2.105	2.375	8	1.0582	0.135	SSN3041012	3 X 12	3.12	3.50	12	1.63	0.189
SSN304089	2 X 9	2.105	2.375	9	1.0582	0.135	SSN304114	4 X 4	4.09	4.50	4	1.73	0.207
SSN3040810	2 X 10	2.105	2.375	10	1.0582	0.135	SSN30411412	4 X 4-1/2	4.09	4.50	4-1/2	1.73	0.207
SSN3040811	2 X 11	2.105	2.375	11	1.0582	0.135	SSN304115	4 X 5	4.09	4.50	5	1.73	0.207
SSN3040812	2 X 12	2.105	2.375	12	1.0582	0.135	SSN304116	4 X 6	4.09	4.50	6	1.73	0.207
SSN304093	2-1/2 X 3	2.52	2.88	3	1.57	0.178	SSN304118	4 X 8	4.09	4.50	8	1.73	0.207
SSN30409312	2-1/2 X 3-1/2	2.52	2.88	3-1/2	1.57	0.178	SSN3041110	4 X 10	4.09	4.50	10	1.73	0.207
SSN304094	2-1/2 X 4	2.52	2.88	4	1.57	0.178	SSN3041112	4 X 12	4.09	4.50	12	1.73	0.207
SSN30409412	2-1/2 X 4-1/2	2.52	2.88	4-1/2	1.57	0.178	SSN304136	6 X 6	6.14	6.63	6	1.95	0.245
SSN304095	2-1/2 X 5	2.52	2.88	5	1.57	0.178	SSN3041312	6 X 12	6.14	6.63	12	1.95	0.245
SSN30409512	2-1/2 X 5-1/2	2.52	2.88	5-1/2	1.57	0.178	SSN304136	6 X 6	6.14	6.63	6	1.95	0.245
SSN304096	2-1/2 X 6	2.52	2.88	6	1.57	0.178	SSN3041312	6 X 12	6.14	6.63	12	1.95	0.245
SSN304098	2-1/2 X 8	2.52	2.88	8	1.57	0.178							



**CALIFORNIA** 5955 Fresca Dr., La Palma CA 90623  
**TEXAS** 1150 Silber Rd., Houston TX 77055  
**ILLINOIS** 278 Windy Point Dr., Glendale Heights, IL 60139  
**GEORGIA** 113 Industrial Blvd., Americus, Georgia 31709  
**NEW YORK** PO Box 27, Rt.22, Brewster NY 10509  
 WEB: [www.matco-norca.com](http://www.matco-norca.com)

• Phone: 866-532-8306 • Fax: 866-532-8307  
 • Phone: 800-935-5456 • Fax: 713-680-2999  
 • Phone: 844-412-5068 • Fax: 800-640-2252  
 • Phone: 800-433-7526 • Fax: 800-533-5134  
 • Phone: 800-431-2082 • Fax: 845-278-9056  
 EMAIL: [mail@matco-norca.com](mailto:mail@matco-norca.com)